

# European System of Social Indicators - Konzeptueller Rahmen und Systemarchitektur

---

Heinz-Herbert Noll

ZUMA - Abt. Soziale Indikatoren

Mannheim

---

# European System of Social Indicators

## Overall Objective:

- To develop a theoretically as well as methodologically well-grounded set of social indicators to be used to monitor the development of welfare or quality of life as well as changes in the social structure at the European level.

## General Properties and Requirements:

- science based, theory and concept driven approach
- comprehensive system
- European perspective
- use of most appropriate - valid and reliable - indicators
- use of best available databases and ensuring cross-national comparability

## Final Product:

- EUSI - Electronic European Information System Social Indicators

# Basic Requirements of Constructing a System of Social Indicators

## Key Questions:

- ⇒ how to choose a limited number of subjects / dimensions of measurement from an unlimited social universe?
- ⇒ how to organize the measurement and monitoring processes?

## Key Elements of an Indicator System:

- ⇒ framework or rationale needed to identify and justify the selection of dimensions of measurement to be addressed
- ⇒ system architecture needed to set up the basic structure and to define procedures of measurement

## Formal Criteria to be respected:

- ◆ comprehensiveness
- ◆ consistency
- ◆ non-redundancy
- ◆ parsimoniousness

## Data, Policy and Concept Driven Approaches of Indicator Construction

- ◆ **Data Driven**

Data ⇒ Indicators ⇒ Classification of Indicators

e.g. Eurostat's „list of social Indicators“

- ◆ **Policy Driven**

Policy concerns ⇒ policy objectives ⇒ Indicators ⇒ Data

e.g. ‚Laeken Indicators‘

- ◆ **Concept Driven**

Concept ⇒ Measurement Dimensions ⇒ Indicators ⇒ Data

e.g. European System of Social Indicators (EUSI)

## Developing a Conceptual Framework for Welfare Measurement

### 2 Types of Analysis:

#### ⇒ Review of Available Concepts of Welfare:

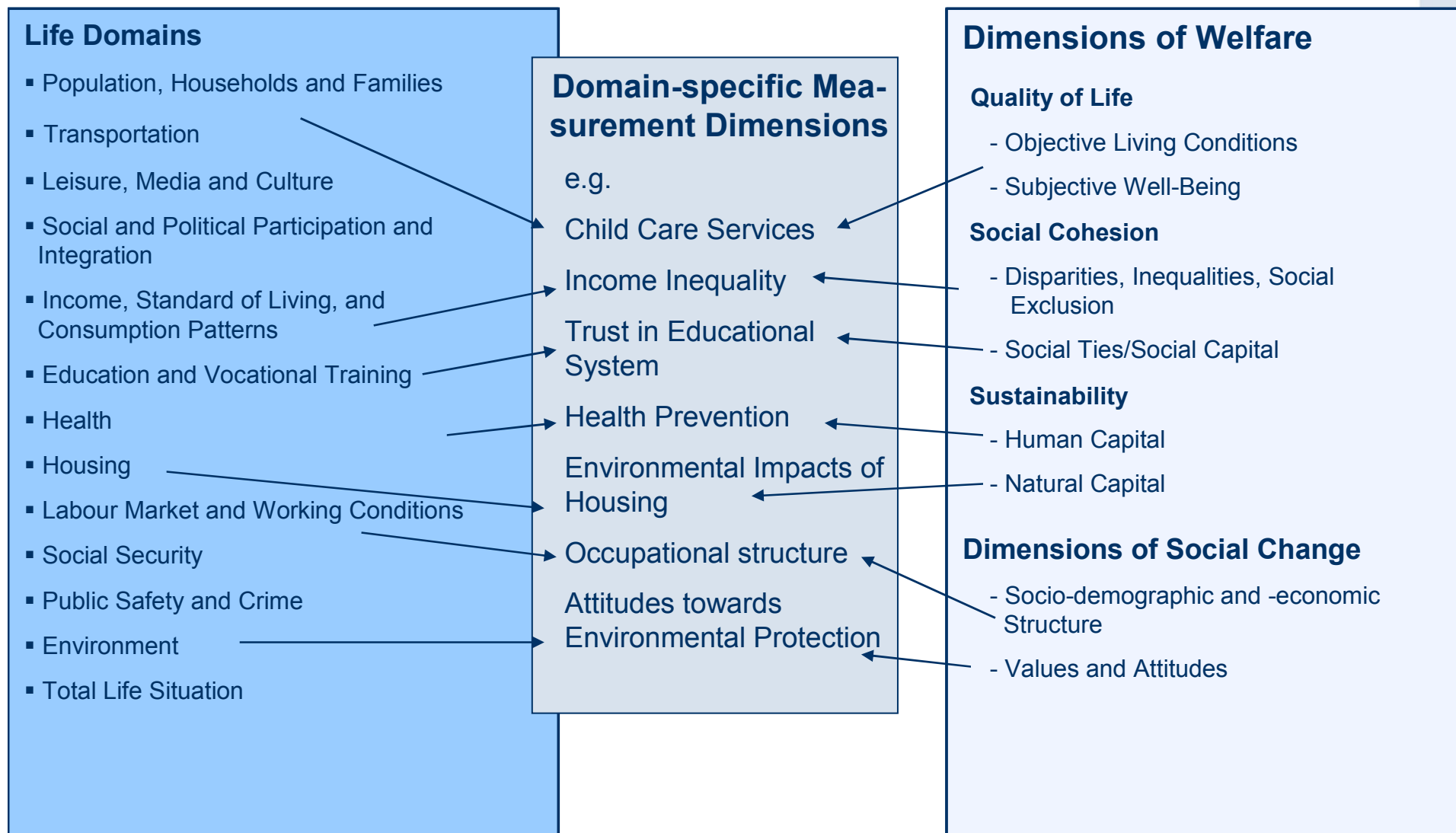
- **Quality of Life**
- Human Development
- Livability
- **Sustainability**
- **Social Cohesion, Social Capital**
- Social Exclusion
- Social Quality

#### ⇒ Review of Political Goals of Societal Development at EU-Level:

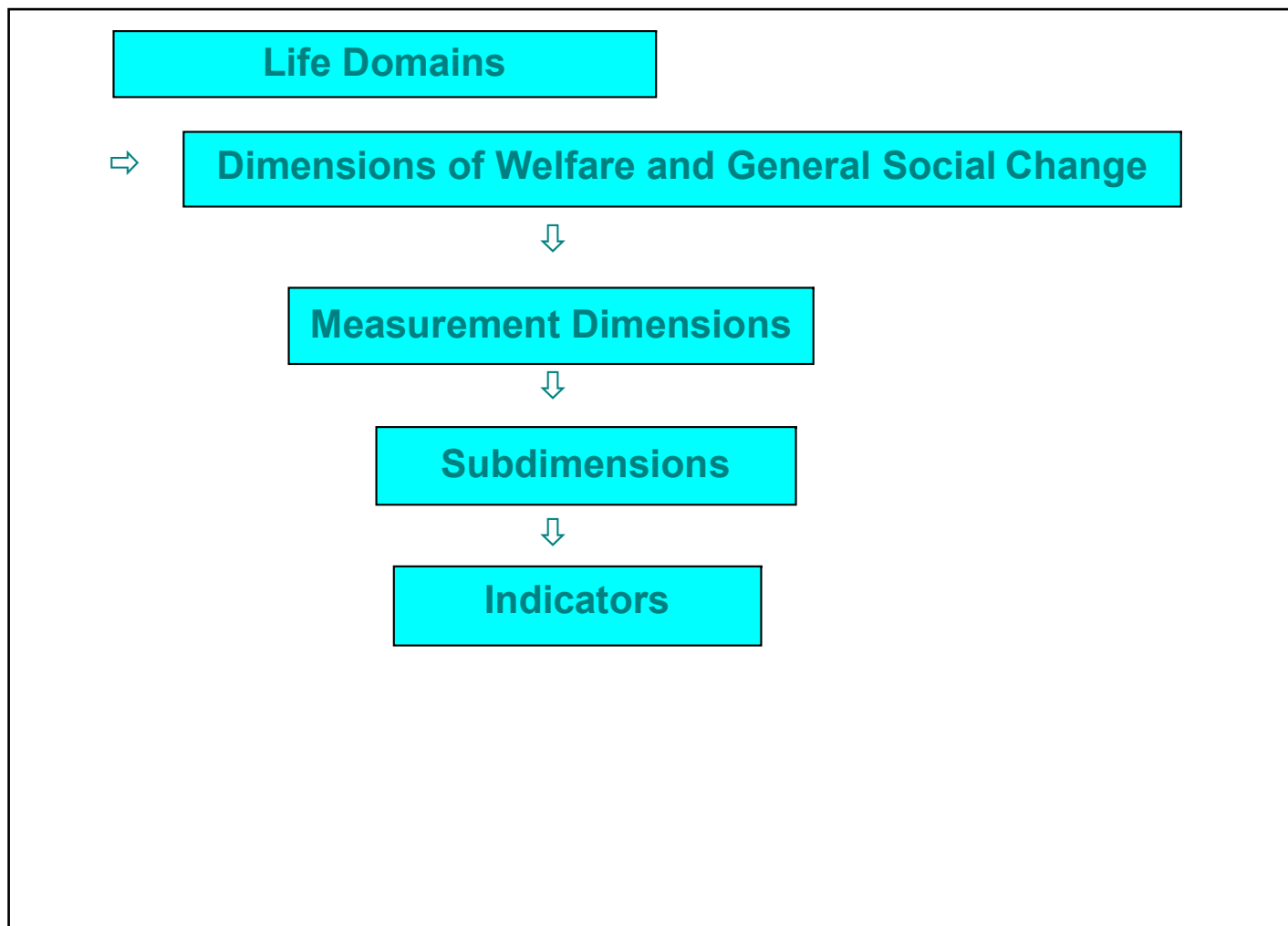
- European Treaties: Rome 1957, Maastricht 1992, Amsterdam 1997
- Other Official Documents of the European Commission:
  - White Papers, Communications, Action Programmes, etc.

	<b>Welfare Measurement</b>	<b>Monitoring Social Change</b>
<b>Individual Level</b>	<p><i>Quality of Life</i></p> <ul style="list-style-type: none"> <li>- living conditions</li> <li>- subjective well being</li> </ul>	<p><i>Values and Attitudes</i> e.g.</p> <ul style="list-style-type: none"> <li>- postmaterialism</li> <li>- gender roles</li> <li>- party preferences etc.</li> </ul>
<b>Societal Level</b>	<p><i>Quality of Society</i></p> <p><i>Sustainability</i></p> <ul style="list-style-type: none"> <li>- preservation of natural and human capital</li> </ul> <p><i>Social Cohesion</i></p> <ul style="list-style-type: none"> <li>- reduction of disparities, inequalities, exclusion</li> <li>- strengthening of relations and ties</li> </ul>	<p><i>Social Structure</i> e.g.</p> <ul style="list-style-type: none"> <li>- demographic</li> <li>- social class</li> <li>- employment etc.</li> </ul>

# Life Domains & Measurement Dimensions



## Dimensional Structure of the European System of Social Indicators



## Life Domain: Labour Market and Working Conditions

Goal Dimensions	Measurement Dimensions
Improvement of Objective Living Conditions	<ul style="list-style-type: none"> <li>▪ labour market: opportunities and risks               <ul style="list-style-type: none"> <li>▪ employment level</li> <li>▪ working conditions                   <ul style="list-style-type: none"> <li>▪ mobility</li> </ul> </li> <li>▪ unemployment</li> </ul> </li> </ul>
Enhancement of Subjective Well-Being	<ul style="list-style-type: none"> <li>▪ evaluations of personal employment situation</li> </ul>
Reduction of Disparities / Inequalities	<ul style="list-style-type: none"> <li>▪ regional disparities of employment opportunities</li> <li>▪ gender inequality of employment opportunities</li> <li>▪ inequality of employment opportunities for disabled people               <ul style="list-style-type: none"> <li>▪ social exclusion: long-term unemployment</li> </ul> </li> </ul>
Strengthening Connections / Social Ties – Social Capital	<ul style="list-style-type: none"> <li>▪ participation of employees in decision making</li> <li>▪ trade-unions and professional organisations               <ul style="list-style-type: none"> <li>▪ European-specific concerns</li> </ul> </li> <li>▪ exchange of working people between countries</li> </ul>
Preservation of Human Capital	<ul style="list-style-type: none"> <li>▪ working accidents and occupational diseases               <ul style="list-style-type: none"> <li>▪ measures of further training</li> </ul> </li> </ul>
Preservation of Natural Capital	<ul style="list-style-type: none"> <li>▪ Consumption of natural resources by economy               <ul style="list-style-type: none"> <li>▪ Environmental pollution by economy</li> </ul> </li> </ul>
Social Structure Socio-Economic Structure  Values and Attitudes	<ul style="list-style-type: none"> <li>▪ employment status</li> <li>▪ occupational structure</li> <li>▪ social stratification               <ul style="list-style-type: none"> <li>▪ work orientation</li> </ul> </li> </ul>

Measurement Dimensions and Subdimensions related to the Goal Dimension  
 "Improvement of Objective Living Conditions" within the Life Domain  
 "Labour Market and Working Conditions"

Measurement Dimensions	Subdimensions
Labour Market: Opportunities and Risks	Employment Opportunities
	Unemployment Risk
Employment: Potential and Level	Labour Force Potential
	Labour Force Participation
	Employment Level
Working Conditions	Working Hours
	Earnings
	Work Environment and Job Content
Mobility	Horizontal Occupational Mobility
	Promotion Chances
	Job Related Geographical Mobility
Unemployment and Underemployment	Level of Unemployment
	Duration of Unemployment
	Subsistence of Unemployed Persons
	Level of Underemployment

**Subdimensions and Indicators related to the Measurement Dimension "Unemployment and Underemployment" within the Life Domain "Labour Market and Working Conditions"**

Measurement Dimensions	Subdimensions	Indicators
Unemployment and Underemployment	Level of Unemployment	- Rate of Total Unemployment
		- Rate of Total Youth Unemployment
		- Share of Total Unemployed in the Working-age Population
		- Persons Seeking Employment
		- Persons Willing to Work
		- Discouraged Persons Currently not in the Labour Force
	Duration of Unemployment	- Average Duration of Unemployment
		- Long-term Unemployment
		- Short-term Unemployment
	Subsistence of Unemployed Persons	- Benefit Coverage Rate
	Level of Underemployment	- Preference for an Increase of Working Hours
		- Involuntary Part-Time Workers
		- Short-Time Workers
- Visible / Invisible Underemployment		

## Some Additional Elements of System's Architecture

- Indicators:  
objective (outcomes, resources, conditions, inputs)  
and subjective (outcomes)
- Coverage  
EU15 - Member States + Norway, Switzerland, Czech Republic,  
Hungary, Poland, Japan, United States  
  
new EU member states are being included step by step
- Periodicity of Observation  
Starting point of time-series: 1980; year by year observations as far  
as data are available
- Level of Regional Disaggregation: NUTS-1 or similar level as far  
as meaningful and data are available

## Data Sources Used for the European System of Social Indicators

### Aggregate data from official national and supra-national statistics (examples):

- Eurostat / European Commission:
  - New Cronos Database
  - Demographic Statistics
  - Labour Force Surveys
  - Household Budget Surveys
  - European System of Integrated Social Protection Statistics (ESSPROS)
- Council of Europe, Demographic Data Base
- UNESCO/ OECD/ Eurostat Data on Education
- WHO – Health for All Database
- OECD Health Data
- International Labour Organization (ILO)
- United Nations High Commissioner for Refugees (UNHCR)
- United Nations Environment Programme (UNEP)
- European Environment Agency (EEA)

### Microdata from international Surveys (examples):

- Eurostat / European Commission:
  - European Community Household Panel (ECHP)
  - Eurobarometer Studies
  - Central and Eastern Eurobarometer (CEEB)
  - Candidate Countries Eurobarometer (CCEB)
- World Values Survey (WVS)
- European Values Study (EVS)
- International Social Survey Programme (ISSP)
- European Social Survey (ESS)
- European Survey on Working Conditions
- Euromodule

## Potential Uses and Applications:

- Tool for Comparative Research
  - descriptive background information for various kinds of analysis
  - database for the comparative charting and analysis of social change
  - database to be used to test macro-sociological hypotheses
  
- Tool for General Social Monitoring and Reporting
  - comparative information on current state and changes of individual living conditions, wellbeing and societal quality
  
- Tool for Policy Making
  - information on goal achievement
  - information on convergence and divergence
  - information on best practice: benchmarking
  - identification of deficiencies and need for action

EUSI Domains **totally** or in part completed:

- **Population, Household and Family**  
ca. 140 Indicators
- **Housing**  
ca. 50 Indicators
- Education and Vocational Training
- **Labour Market and Working Conditions**  
ca. 160 Indicators
- Income, Standard of Living, and Consumption Patterns
- Health
- Total Life Situation

# Major Form of Access to the Data: ⇒ Website

**EUSI - European System of Social Indicators - Service Guide - Mozilla Firefox**

File Edit View Go Bookmarks Tools Help

http://www.gesis.org/en/social\_monitoring/social\_indicators/data/EUSI/index.htm

Instant Message Instant Message Internet Lookup New&Cool Nach der Winterpause ...

EUSI - European System ...

GESIS Social Science Infrastructure Services Search Sitemap Help

Service Agency Eastern Europe ZUMA Centre for Survey Research and Methodology

IZ Social Science Information Centre ZA Central Archive for Empirical Social Research, University of Cologne

Literature & Research Information  
 Data Service & Archiving  
 Social Monitoring  
 ALLBUS  
 ISSP  
 GML  
 Social Indicators  
 Service Guide  
 News  
 Data  
 Research  
 Publications  
 Sources  
 Events  
 Order & Download  
 Staff & Addresses  
 DGS Social Indicators Section  
 Method Consultation  
 Research & Development  
 Software  
 Publications  
 Order & Downloads  
 Events  
 GESIS Libraries  
 Link Collection SocioGuide  
 Cooperation  
 Consultation  
 Staff & Addresses  
 Organization

## European System of Social Indicators

<b>Overview</b>	<ul style="list-style-type: none"> <li>▶ <a href="#">Introduction</a></li> <li>▶ <a href="#">Conceptual Framework</a></li> <li>▶ <a href="#">Project History</a></li> <li>▶ <a href="#">Contact</a></li> </ul>	
<b>Indicators</b>	Life Domains <ul style="list-style-type: none"> <li>▶ <a href="#">Population, Households and Families</a></li> <li>▶ <a href="#">Housing</a></li> <li>▶ <a href="#">Transport</a></li> <li>▶ <a href="#">Leisure, Media and Culture</a></li> <li>▶ <a href="#">Social and Political Participation and Integration</a></li> <li>▶ <a href="#">Education and Vocational Training</a></li> <li>▶ <a href="#">Labour Market and Working Conditions</a></li> </ul>	<ul style="list-style-type: none"> <li>▶ <a href="#">Income, Standard of Living, and Consumption Patterns</a></li> <li>▶ <a href="#">Health</a></li> <li>▶ <a href="#">Environment</a></li> <li>▶ <a href="#">Social Security</a></li> <li>▶ <a href="#">Public Safety and Crime</a></li> <li>▶ <a href="#">Total Life Situation</a></li> </ul>
<b>Publications</b>	<ul style="list-style-type: none"> <li>▶ <a href="#">EuReporting Working Papers</a></li> <li>▶ <a href="#">Other Publications</a></li> <li>▶ <a href="#">Selected Presentations</a></li> </ul>	
<b>Links</b>	Institutions, Data Sources & Activities Related to Social Monitoring and Reporting <ul style="list-style-type: none"> <li>▶ <a href="#">Sorted by Countries</a></li> </ul>	

- Social Monitoring
- ALLBUS
- ISSP
- GML
- Social Indicators
  - Service Guide
  - News
  - Data
  - Research
  - Publications
  - Sources
  - Events
  - Order & Download
  - Staff & Addresses
  - DGS Social Indicators Section
- Method Consultation
- Research & Development
- Software
- Publications
  
- Order & Downloads
- Events
- GESIS Libraries
- Link Collection SocioGuide
  
- Cooperation
- Consultation
- Staff & Addresses
- Organization

## European System of Social Indicators

### Indicators

[Back to EUSI Homepage](#)

[Back to Life Domains Overview](#)

## Income, Standard of Living, and Consumption Patterns

According to the [conceptual framework](#) of the European System of Social Indicators, all measurement dimensions and indicators of the life domain 'Income Standard of Living, and Consumption Patterns' refer to one of six major dimensions of welfare development or two dimensions of general social change:

### Dimensions of Welfare Development

- » [Objective Living Conditions](#)
- » [Subjective Well-Being](#)
- » [Disparities, Inequalities and Social Exclusion](#)
- » [Social Relations and Ties](#)
- » [Human Capital](#)
- » [Natural Capital](#)

### Dimensions of General Social Change

- » [Demographic and Socio-Economic Structures](#)
- » [Values and Attitudes](#)

## Objective Living Conditions

### Income Level

- I1111 Gross Domestic Product per Capita
- I1112 Household Net Income
- I1113 Equivalised Household Net Income per Capita

### Standard of Living

Level of Private Consumption

- I1211 Household Final Consumption Expenditure per Capita
- I1212 Consumption Expenditure on Food and Non-alcoholic Beverages
- I1213 Affordability of a Holiday Trip

Options x

Bookmarks

- Standard of Living
  - Level of Private Con
    - I1211 Household
      - Total

Pages

Attachments

Comments

**Life Domain:** Income, Standard of Living and Consumption Patterns **Goal Dimension:** Improvement of Objective Living Condi

**Measurement Dimension:** Standard of Living

**Subdimension:** Level of Private Consumption

**Indicator:** I1211 Household Final Consumption Expenditure per Capita

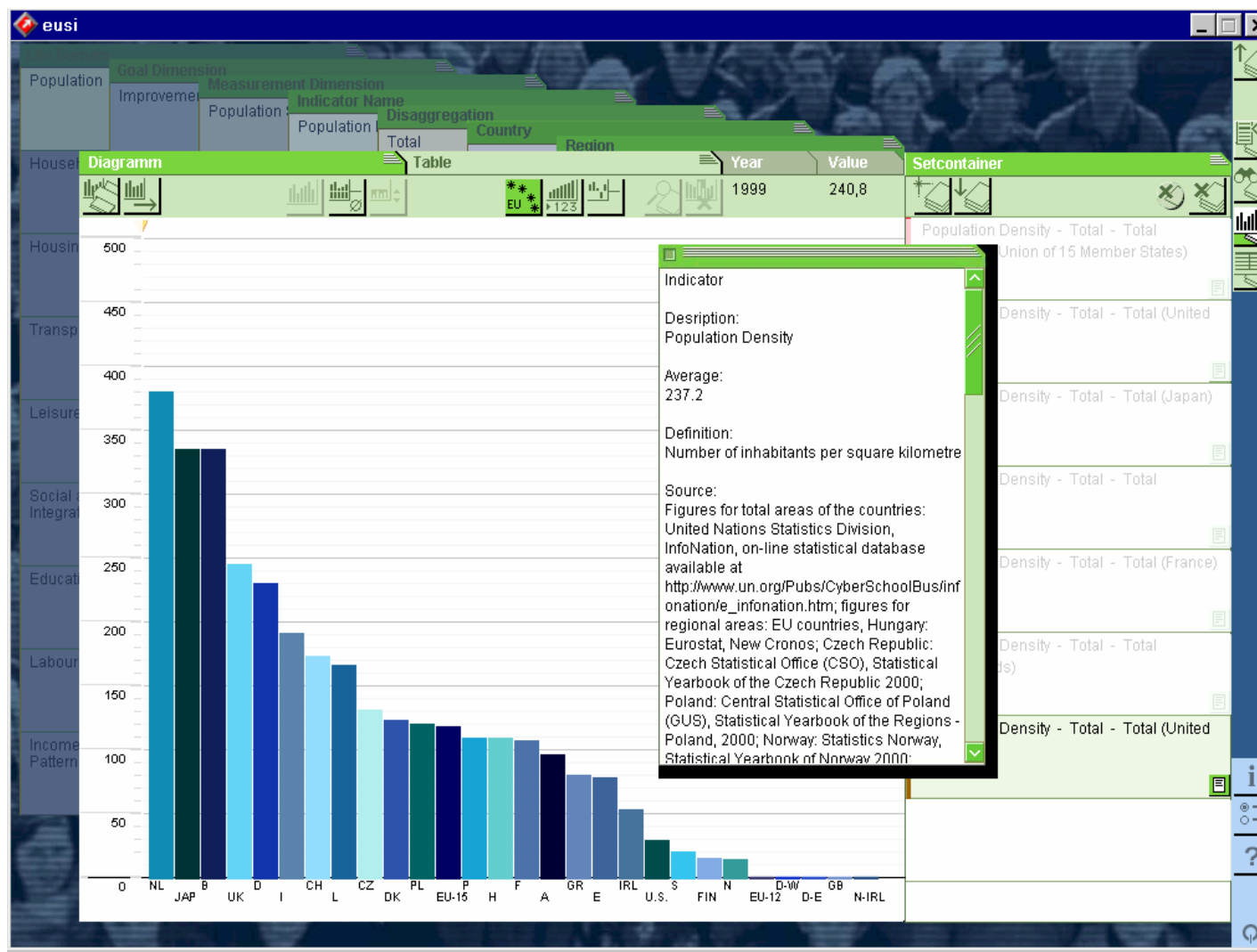
**Definition:** Final consumption expenditure of private households per capita at the price levels and PPPs of 1995 (billions of US dollars)

**Population:** total

Country	1980	1981	1982	1983	1984	1985	1986	1987	1988	1989	1990	1991	1992	1993	1994	1995	1996	1997	1998	1999	2000	2001	2002
EU-12																							
EU-15																11288	11481	11695	12048	12455	12789	12981	
EU-25																							
A	9013	9117	9342	9818	9713	9971	10056	10300	10600	11000	11379	11532	11716	11708	11917	12348	12725	12978	13319	13622	14050	14211	14276
B				9134	9165	9421	9672	9845	10143	10434	10740	11024	11187	11083	11309	11466	11579	11778	12127	12365	12753	12821	12797
D												11475	11686	11609	11688	11983	11954	11991	12196	12630	12856	13021	12850
D-W																							
D-E																							
DK	9217	9054	9233	9301	9476	9792	10352	10165	10157	10138	10126	10256	10414	10427	11062	11160	11372	11655	11990	11920	11794	11721	11746
E	7255	7137	7102	7096	7052	7187	7406	7827	8187	8609	8993	9129	9302	9092	9162	9305	9493	9777	10175	10603	10940	11158	11372
F	9566	9656	9871	9869	9874	9982	10287	10532	10758	11014	11245	11264	11310	11196	11286	11384	11490	11466	11817	12147	12408	12666	12751
FIN	7569	7625	7936	8147	8373	8640	8907	9330	9918	10315	10139	9699	9235	8933	9022	9354	9665	9967	10358	10685	10995	11166	11310
GB																							
GR																9446	9608	9804	10094	10294	10471	10758	11043
I	9016	9177	9276	9297	9577	9868	10266	10655	11081	11490	11723	12057	12267	11774	11924	12105	12233	12603	12988	13310	13647	13716	
IRL											9145	8248	8404	8595	8923	9135	9687	10297	10975	11916	12798	13285	13384
N-IRL																							
L					12091	12415	12883	13519	14004	14287	15075	14488	14543	14919	14959	15381	15761	16596	16747	17238	17873	18050	
NL							9506	9515	9747	10049	10235	10206	10164	10248	10498	10871	11143	11614	12085	12388	12469	12491	
P												7992	8046	8106	8125	8346	8597	9002	9431	9646	9702		
S	9233	9144	9209	9002	9173	9460	9937	10434	10659	10714	10566	10597	10389	9954	10069	10136	10286	10561	10869	11312	11774	11789	11922
UK	8508	8502	8574	8921	9096	9411	10003	10523	11296	11650	11709	11480	11513	11789	12106	12270	12707	13148	13618	14203	14794	15154	15619
CY																							
CZ														5689	6022	6509	6673	6559	6692	6855	7147	7446	
EE																							
H																4768	4596	4690	4911	5200	5501	5829	6450
LV																							
LT																							
MT																							
PL																4484	4866	5200	5448	5732	5892	6015	6285
SK														3964	3987	4173	4507	4758	5036	5170	5119	5368	5678
SI																							
CH											15304	15391	15296	15097	15139	15150	15268	15495	15827	16115	16423	16612	16498
N	8772	8736	8776	8913	9180	10053	10518	10373	10090	9972	10002	10195	10356	10556	10853	11226	11933	12276	12537	12859	13292	13479	13866
U.S.	13727	13773	13809	14431	15077	15683	16194	16583	17096	17387	17523	17267	17527	17880	18331	18658	19029	19473	20168	20924	21697	21920	22397
JAP	8245	8302	8609	8786	8937	9235	9479	9823	10257	10706	11160	11440	11690	11810	12100	12252	12521	12606	12533	12515	12631	12802	12890

■ Electronic European Information System Social Indicators (Prototype)

⇒ Planned: Web-based Electronic Information System



Für Spezielle Anwendungsinteressen:

SPSS – File(s)

## More information on the European System of Social Indicators:

[http://www.gesis.org/en/social\\_monitoring/social\\_indicators/EU\\_Reporting/eusi.htm](http://www.gesis.org/en/social_monitoring/social_indicators/EU_Reporting/eusi.htm)

Berger-Schmitt, Regina; Noll, Heinz-Herbert: Conceptual Framework and Structure of a European System of Social Indicators. EuReporting Working Paper No. 9, Subproject "European System of Social Indicators". Mannheim: Centre for Survey Research and Methodology (ZUMA), Social Indicators Department, 2000

Noll, Heinz-Herbert: Towards a European System of Social Indicators: Theoretical Framework and System Architecture. In: Social Indicators Research, Special Issue, Vol. 58 (2002), 1-3, S. 47-84.