



Integrated European Social Statistics

Frank Espelage / Emilio di Meglio
EUROSTAT Directorate F
Social Statistics

Frank.Espelage@ec.europa.eu

Emilio.di-Meglio@ec.europa.eu

Outline

- *Background*
- *Integrated European Social Statistics Framework Regulation (IESS FR)*
- *Standardisation of social variables*
- *LFS – new and deleted content*
- *LFS – input harmonisation*
- *SILC – modularization and other improvements*
- *SILC – regionalization*

Background

'Establishing a common framework for European statistics relating to persons and households, based on data at individual level collected from samples'

- Streamlining and integration of social surveys
- Standardisation of concepts and methods
- Harmonisation of variables

Aiming at

- Increased timeliness and relevance
- Higher quality, coherence and comparability

Background

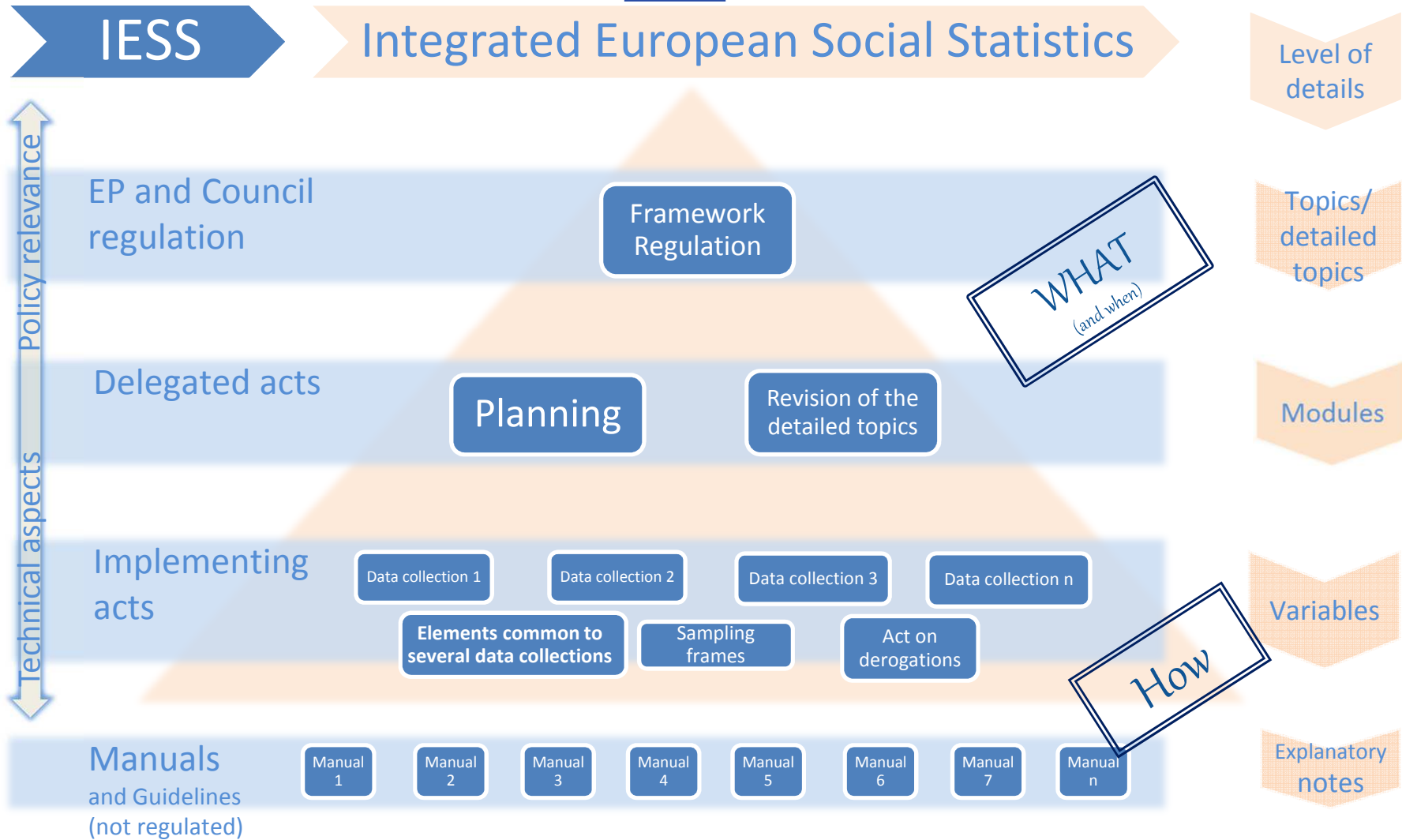
Surveys covered

- Labour Force Survey (LFS)
- Statistics on Income and Living Conditions (SILC)
- Survey on ICT usage in households (ICT-HH)
- Adult Education Survey (AES)
- Health Interview Survey (EHIS)
- Household Budget Survey (HBS)
- Time Use Survey (TUS)



Integrated European Social Statistics Framework Regulation (IESS FR)

- Timing
 - **First stage: LFS, SILC, ICT (HHs), AES, EHIS**
 - **Second stage: HBS and TUS**
- Legal architecture based on a pyramid
 - **Most policy driven part on the top**
 - **Most technical part at the bottom**
- Content
 - **A core text plus several**
 - **Annexes (topics covered; precision requirements; sample characteristics; periodicity; data transmission deadlines)**



IESS FR - overview

- Domains (labour market, income and living conditions,...), topics, detailed topics
- Precision requirements: better defined, common formulation
- Sample characteristics
 - **LFS: distributional requirements, compulsory quarterly and annual overlap**
 - **SILC: distributional requirements, six-year rotation scheme**

IESS FR - overview

- Periodicity
 - **LFS: quarterly, annually, biennially or every 8 years; ad-hoc subjects every 4 years**
 - **SILC: annual, triennial or sexennial information; ad-hoc subjects every 2 years**
 - **ICT-HH: annually**
 - **AES, EHIS: every 6 years**
 - **HBS: every 5 years**
 - **TUS: every 10 years**

IESS FR – overview

EU-LFS over a 8-year period

Nucleus (all years)		Every 2 years		Every 8 years	
Quarterly variables		Yearly variables		Biennial variables	Regular modules/ad-hoc subjects
Demography	Q	Further details	Y	Reason for migrating	Work organisation and working time arrangements
Labour market participation	Q			Atypical work	Accidents at work and other work-related health problems
Job tenure and previous work experience	Q			Participation in education and training 12 months	Labour market situation of migrants and their immediate descendants
Working conditions incl. working hours and working time arrangements	Q			Minimum health module	Module on ad-hoc subject
Educational attainment and background	Q				Transition from work into retirement
Participation in education and training	Q		Young people on the labour market	Reconciliation between work and family life	Module on ad-hoc subject

IESS FR – overview

EU-SILC over a 6-year period

Nucleus (all years) (EU2020, main indicators)	Y E A R	Every 3-year modules Max. 20 var. each, indicative order only	Every 6-year modules Max. 20 var. each, indicative order only
Income	1	Health	Quality of life, social & cultural participation
(revised) Material Deprivation	2	Children	New policy needs 1
Economic activity	3	Labour & housing conditions	Over-indebtedness, wealth, consumption
Demography	4	Health	New policy needs 2
Education	5	Children	Access to services, social transfers in kind
Child care	6	Labour & housing conditions	Intergenerational & Homelessness?/New policy 3
Housing costs			
Health			
Quality of Life			
1st wave			
Miscellaneous			

IESS FR - overview

- Transmission deadlines
 - **LFS:**
 - Quarterly: from 12 over 10 to 8 weeks
 - Other (annual, household, modules): from 31 March N+1 to 15 March N+1
 - **SILC:**
 - Cross-sectional for year N: by end of year N; final income data, exceptionally, by end of February N+1
 - Longitudinal (six years ending in year N): by 31 October N+1



IESS FR - overview

- Adopted by the Commission on 24 August 2016 – COM (2016)551
- Currently discussed by Council and Parliament (might lead to changes!)
- Agreement on legal act expected by end 2017
- Current planning: implementation starts in 2019



IESS – common legal acts

- Planning: timing of surveys and modules
- Sampling frames
- Common elements (standardised variables; definition of resident population; household; ((dependent) child...))
- Quality (including definition of proxy answers; non-response)

I ESS – domain specific legal acts

- LFS implementing measures
- Monthly Unemployment Rate (first time ever)
- SILC implementing measures
- ...

Standardisation of social variables

- First attempts more than 10 years ago
- IESS: Implementation of standardised variables strengthened through inclusion in legislation
- Affects elements common to several datasets

Standardisation of social variables

- Variables used in more than one EU social survey
 - **Concepts and data transmission categories to be standardised**
 - **Aim: detailed methodological manual ('standard descriptions')**
 - **Some precise information into implementing act on common elements**
- 28 variables concerned
 - **18 core social variables: in all data collections**
 - **10 standardised variables: in at least two data collections**

Standardisation of social variables

	Variables	P1/P2 variable	Core variable
P1 variables	(1) Sex	P1	Yes
	(2) Age in completed years	P1	Yes
	(3) Household grid	P1	
	(4) Partners living in the same household	P1	Yes
	(5) Household size	P1	Yes
	(6) Household type	P1	Yes
	(7) Tenure status of the household	P1	
	(8) Main activity status (self-defined)	P1	Yes
	(9) Full- or part-time main job (self-defined)	P1	Yes
	(10) Permanency of main job	P1	
	(11) Educational attainment level	P1	Yes
	(12) Participation in formal education and training (student or apprentice) in <reference period>	P1	
	(13) Level of the current/most recent formal education or training activity	P1	

Standardisation of social variables

	Variables	P1/P2 variable	Core variable
P2 variables	(14) Country of birth	P2	Yes
	(15) Country of main citizenship	P2	Yes
	(16) Country of birth of the father	P2	Yes
	(17) Country of birth of the mother	P2	Yes
	(18) Duration of stay in the country of residence in completed years	P2	
	(19) Country of residence	P2	Yes
	(20) Region of residence	P2	Yes
	(21) Degree of urbanisation	P2	Yes
	(22) Status in employment in the main job	P2	Yes
	(23) Economic activity of the local unit for main job (economic sector)	P2	Yes
	(24) Occupation in main job	P2	Yes
	(25) Self-perceived general health	P2	
	(26) Long-standing health problem	P2	
	(27) Limitation in activities because of health problems	P2	
(28) Current household income	P2		

Standardisation of social variables

Example: P1 variable 'SEX'

- Name of the variable: *Sex*
- Variable definition: *The variable refers to the biological and physiological characteristics that define a person to be either male or female.*
- Categories for the variable: **Male, Female**
- Topic and detailed topic: Person and household characteristics, Demography
- Implementation guidelines, reference questions,...

LFS - new content

- Interview mode, sampling information
- Country of birth of father/mother, country of previous residence, reason for migrating
- Dependent self-employment: existence of main client, main reason for becoming self-employed
- Contractual working hours, better measurement of absences, usual working hours second job, variability of working time

LFS - new content

- Self-declared main activity status compulsory
- Work experience at a workplace as part of HATLEVEL
- Participation in education and training 4 weeks AND 12 months
- Minimum health module (self-perceived health status, limitation in activities)
- Better wage deciles
- ...

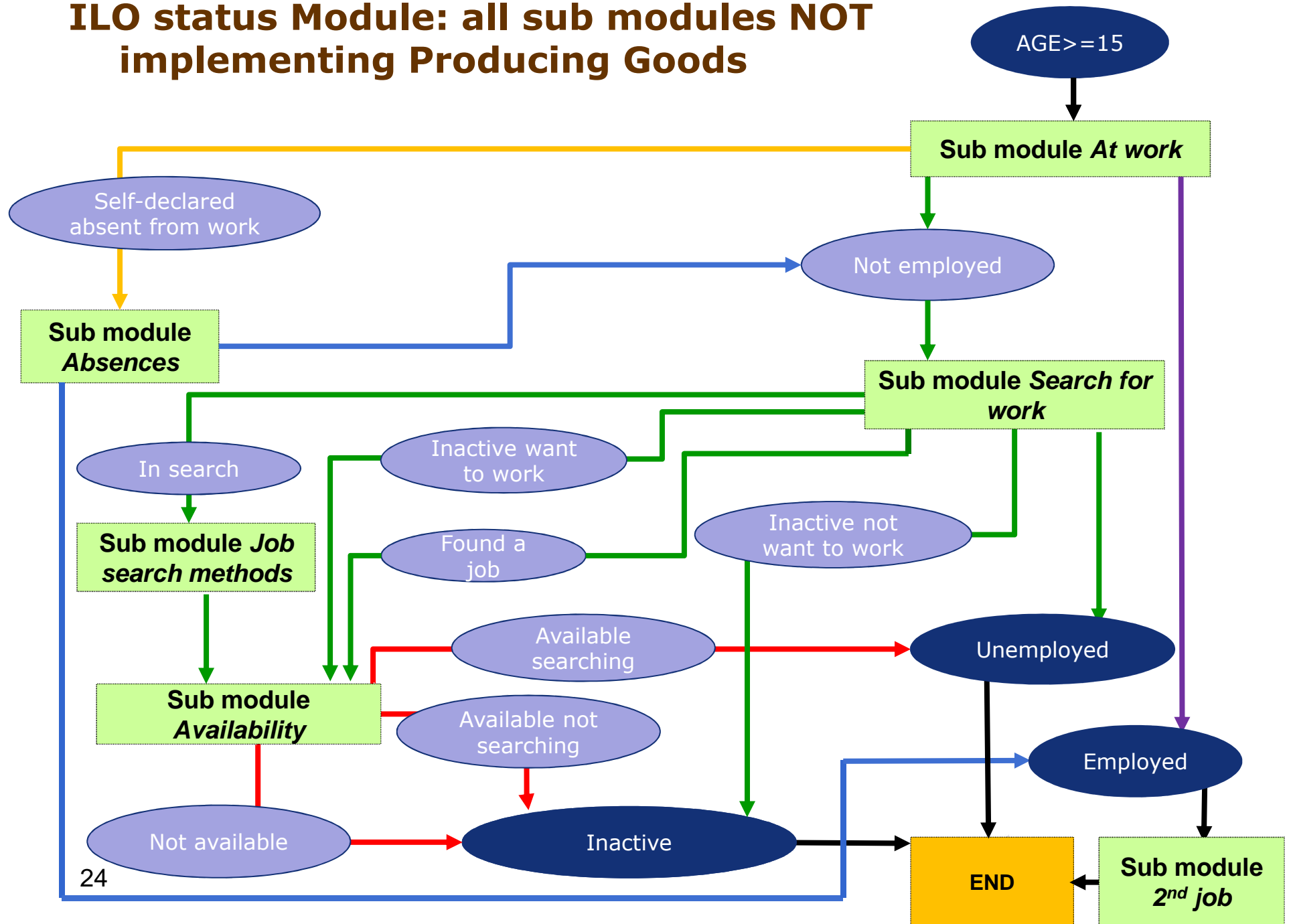
LFS - deleted content

- Marital status
- Distinction paid/unpaid overtime
- Reason for exact hours worked
- Detailed job search methods
- Voluntary education variables
- Situation one year before
- ...

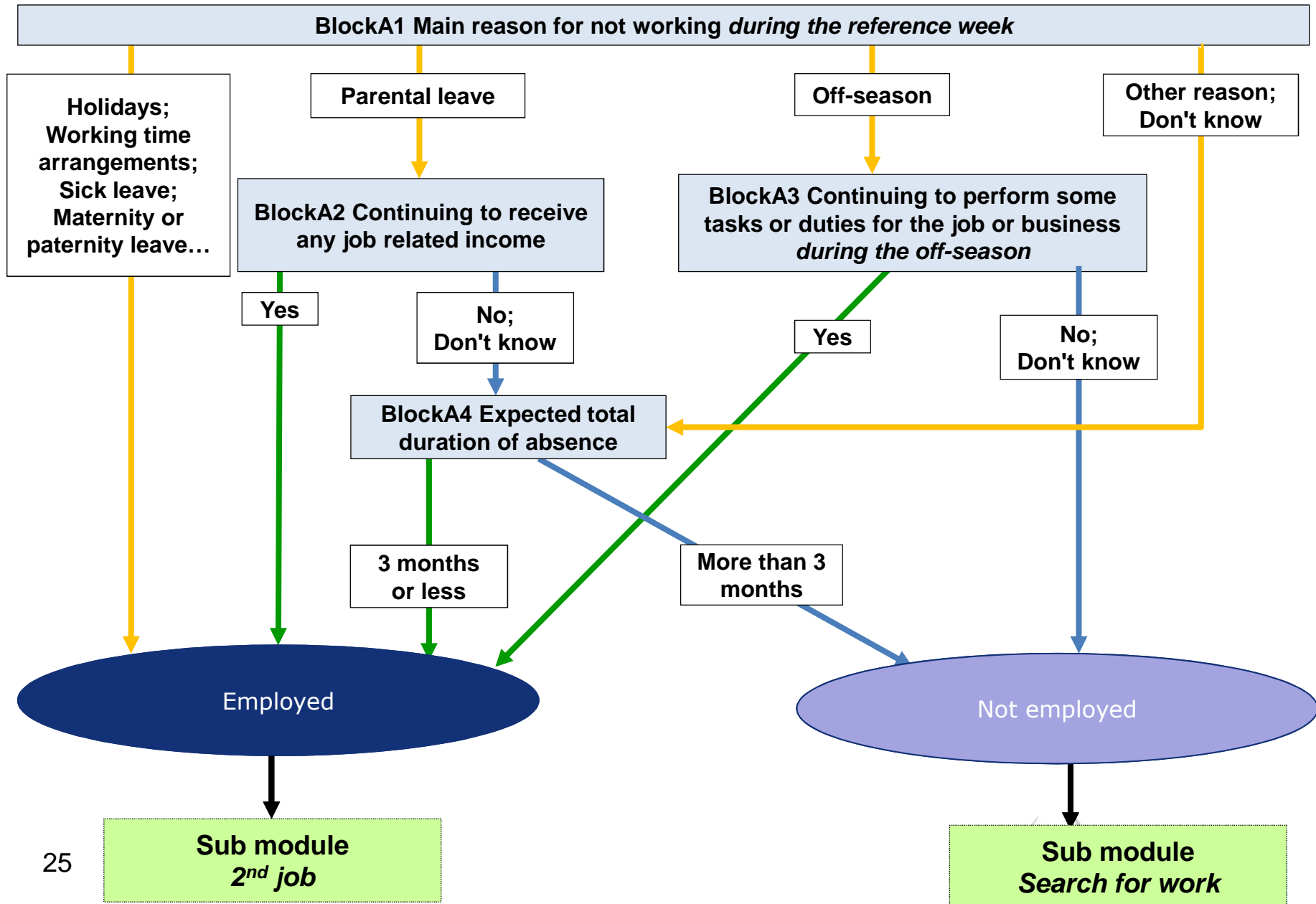
LFS – input harmonisation: flowcharts and model questionnaires

- IESS FR allows input harmonisation for measuring employment/unemployment in the labour market domain **in the LFS implementing act**
- **Flowcharts**/model questionnaires defining order and formulation of questions on the labour status
- In parallel aligning the LFS to the 19th ICLS – October 2013 resolution concerning statistics of work, employment and labour underutilization

ILO status Module: all sub modules NOT implementing Producing Goods



Sub module 'Absences from work (for the main job)' NOT implementing Producing Agricultural Goods



LFS – input harmonisation: consequences

- Increased harmonisation, but
- Breaks in series in several countries
 - **EU2020 indicators**
 - **Macroeconomic imbalance procedure**
- How to assess the size of the break, given that many other things will change in parallel?
 - **Parallel data collection old/new LFS**
 - **Comparison with external, e.g. administrative sources**
 - **Modelling**

SILC improvements

- The new modular structure will allow a rationalization of EU-SILC content
- Space for new policy needs
- Currently cognitive and full scale tests are ongoing to finalize the list of variables
- Need for detailed income from benefit to feed Euromod
- Proposal of a reference questionnaire and more input harmonization (on some variables)

SILC improvements: longitudinal component

- Policy needs:
 - **Strengthen indicators on year-to-year transition**
 - **Improving the measurement of persistent-AROP**
 - **Identify/monitor the recurrence of poverty**
- Technical solution:
 - **Increase the number of years of the rotational design, to 6 years**

SILC: new longitudinal component

YEAR:		y		y+2		y+4		y+6		y+8		y+10
Panel												
P	1260	1008	907									
P+1	1800	1260	1008	907								
P+2		1800	1260	1008	907	489	440					
P+3			1800	1260	1008	907	489	440				
P+4				1800	1260	1008	907	489	440			
P+5					1800	1260	1008	907	489	440		
P+6						1374	962	770	693	624	562	
P+7							1374	962	770	693	624	562
P+8								1374	962	770	693	624
P+9									1374	962	770	693
P+10										1374	962	770
P+11											1374	962
P+12												1374
Total annual sample			4975	4975	4975	5038	5180	4942	4728	4863	4985	4985
Of which for the Permanent AROP			907	907	907	1396	1836	1836	1622	1757	1879	1879

SILC improvements: regional data

- National AROPE indicator → confidence interval from ± 1 pp for large countries to ± 1.5 pp for small ones
- Regional AROPE indicator → confidence interval from ± 2.8 (regions > 2 million HH) to ± 4.0 pp. (from 0.25 million HH)
- Data representative at NUTS2 level