



Research Data Management and RDM-Training @ GESIS

Meet the Experts – GESIS online talks

Data Services, Data Archiving, and Research Data Management

Anja Perry & Sebastian Netscher, 23.11.2023

Introduction of Speakers



Dr. Anja Perry

- since 2012 staff member of GESIS – Leibniz-Institute for the Social Sciences
- since 2016 active in (research) data management, e.g., consulting research projects and providing trainings
- research interests in data management, e.g., motivation to share data, RDM efforts, and data protection
- contact: anja.perry@gesis.org



Dr. Sebastian Netscher

- since 2006 staff member of GESIS – Leibniz-Institute for the Social Sciences
- since 2009 active in (research) data management, e.g., providing consultation and designing trainings and training materials
- research interests in data management, e.g., its standardization and harmonization as well as in its efforts and expenses
- contact: sebastian.netscher@gesis.org



Our topics



KonsortSWD 
Konsortium für die
Sozial-, Verhaltens-, Bildungs- und
Wirtschaftswissenschaften



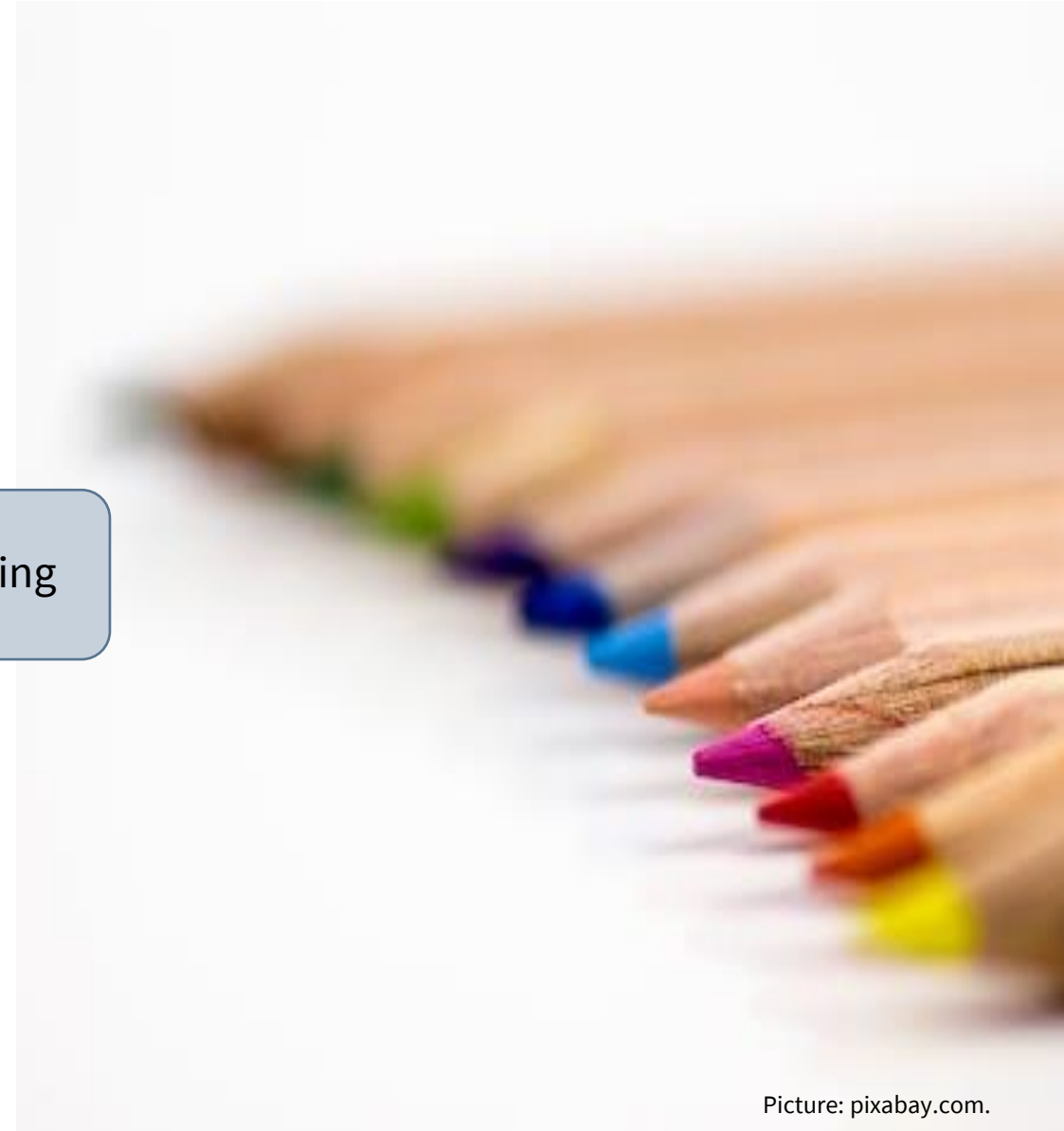
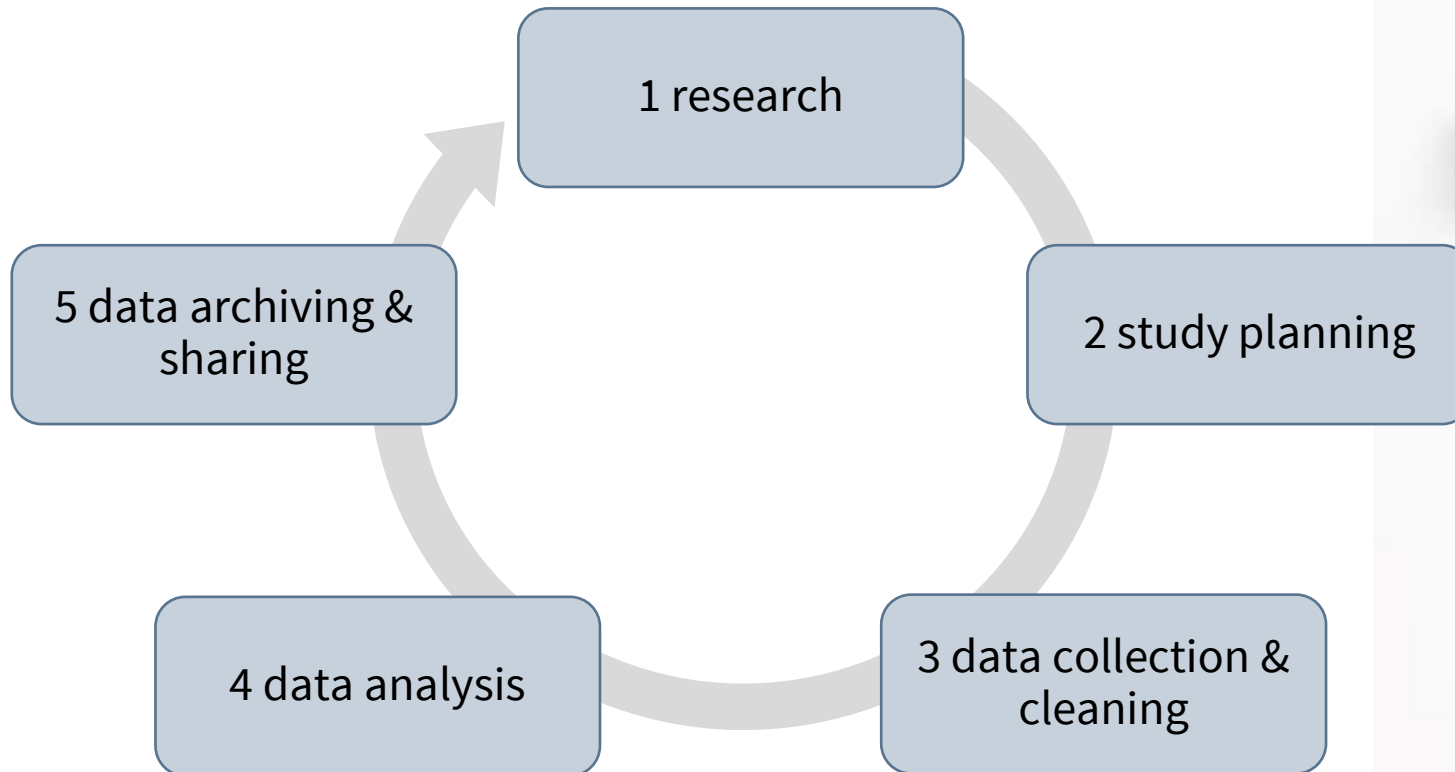
Our teams

- ▼ Archiving
- ▼ Data Acquisitions and Access
- ▼ Metadata Standards and Interoperability

Research Data Management in the Social Sciences



Research Data Management and the Data Life Cycle



1 Research

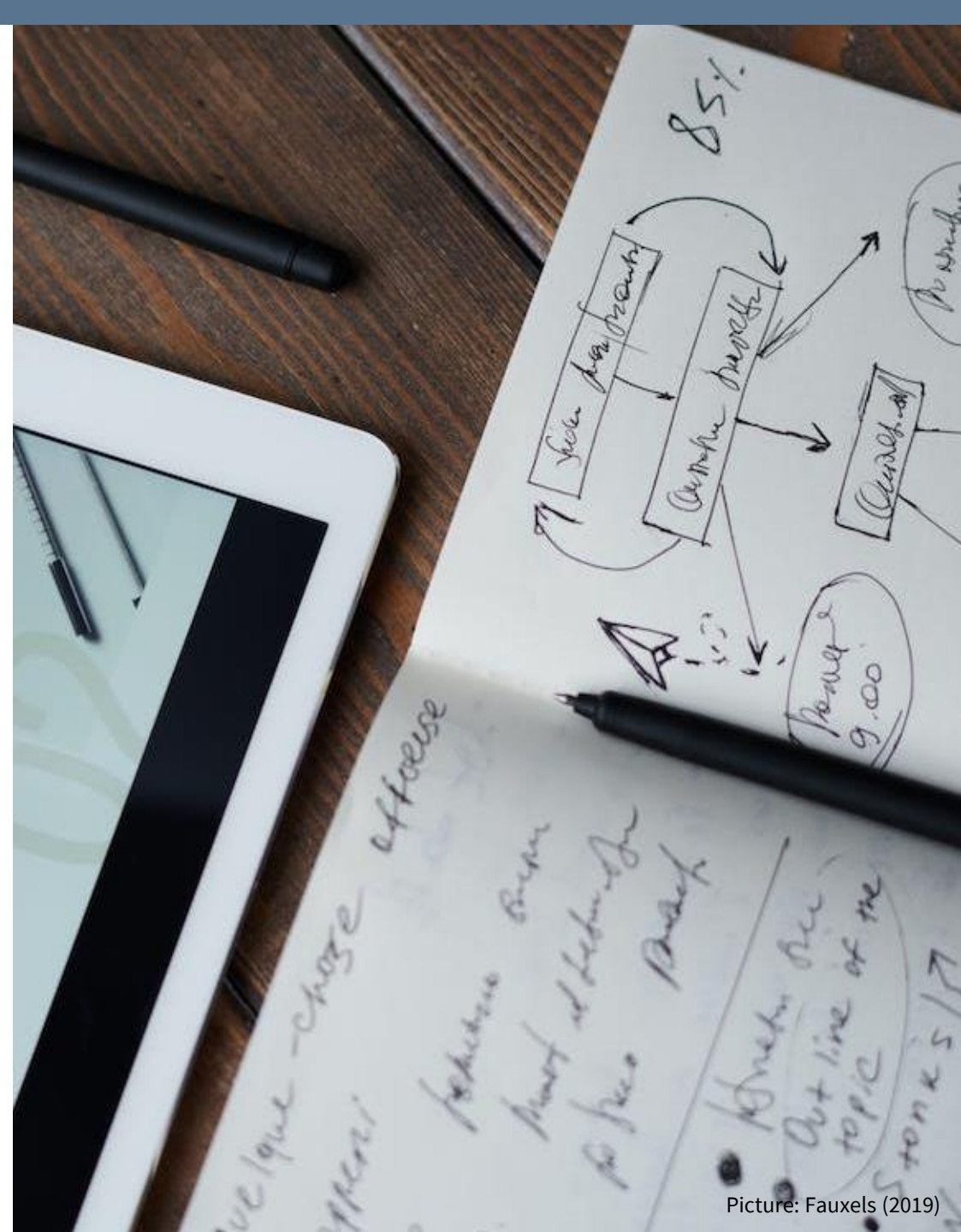
First ethical review of

- risks for research population and further (groups of) persons involved
- research design and how it minimizes identified risks

Documentation of

- search for re-usable data and materials
- the added value of new data

Identify suitable repositories for new data



2 Study planning

Consider ethical aspects and obtain, e.g., ethics vote

Documentation of

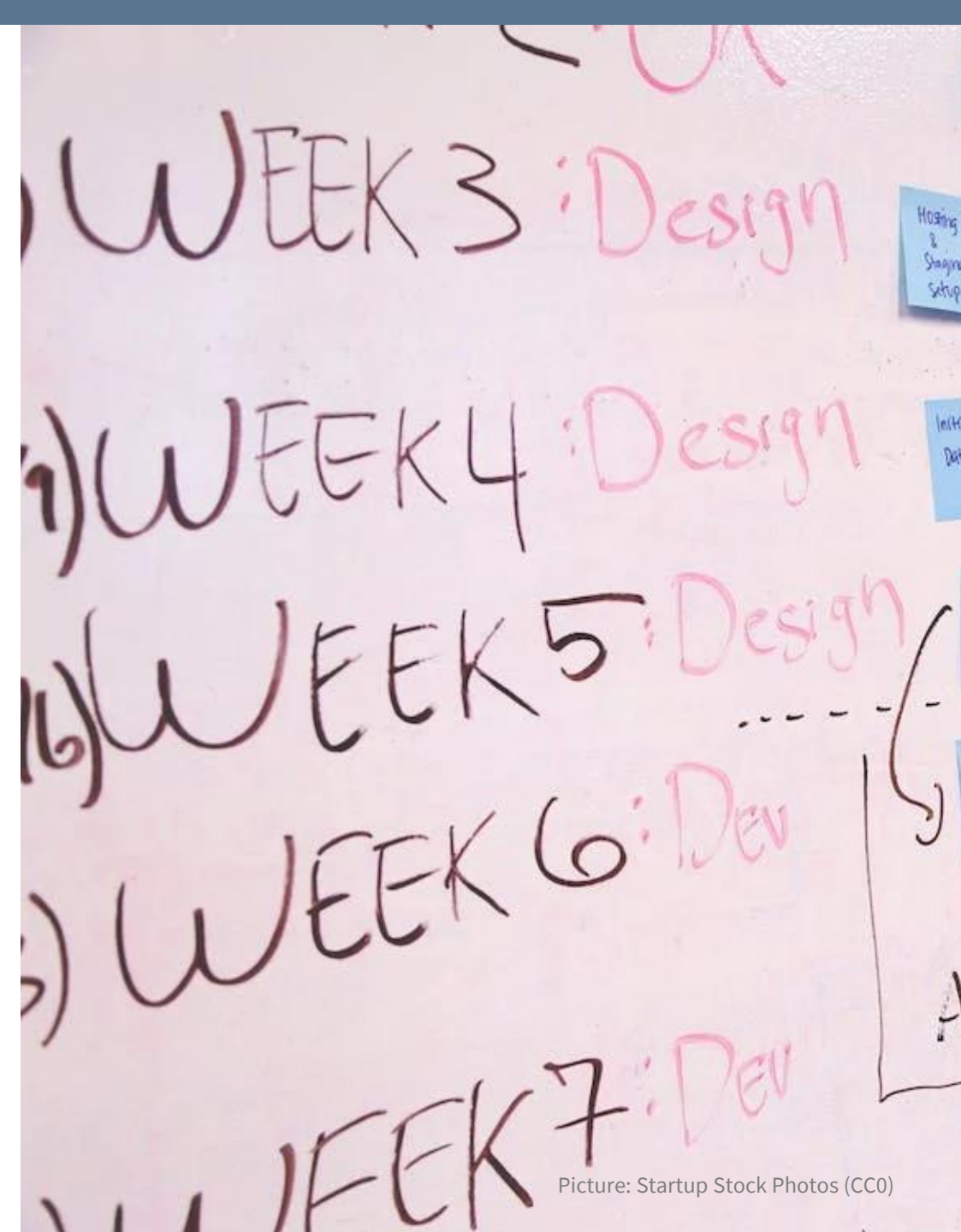
- defining the research population and drawing a sample
- developing the measurement instrument and pre-tests

Data protection

- measures to protect personal data in the field period and to ensure secure data processing
- consent form and consent management

Copyrights and rights of usage (in the project and beyond)

Guidelines for storing, naming, versioning and backing up of data and related materials



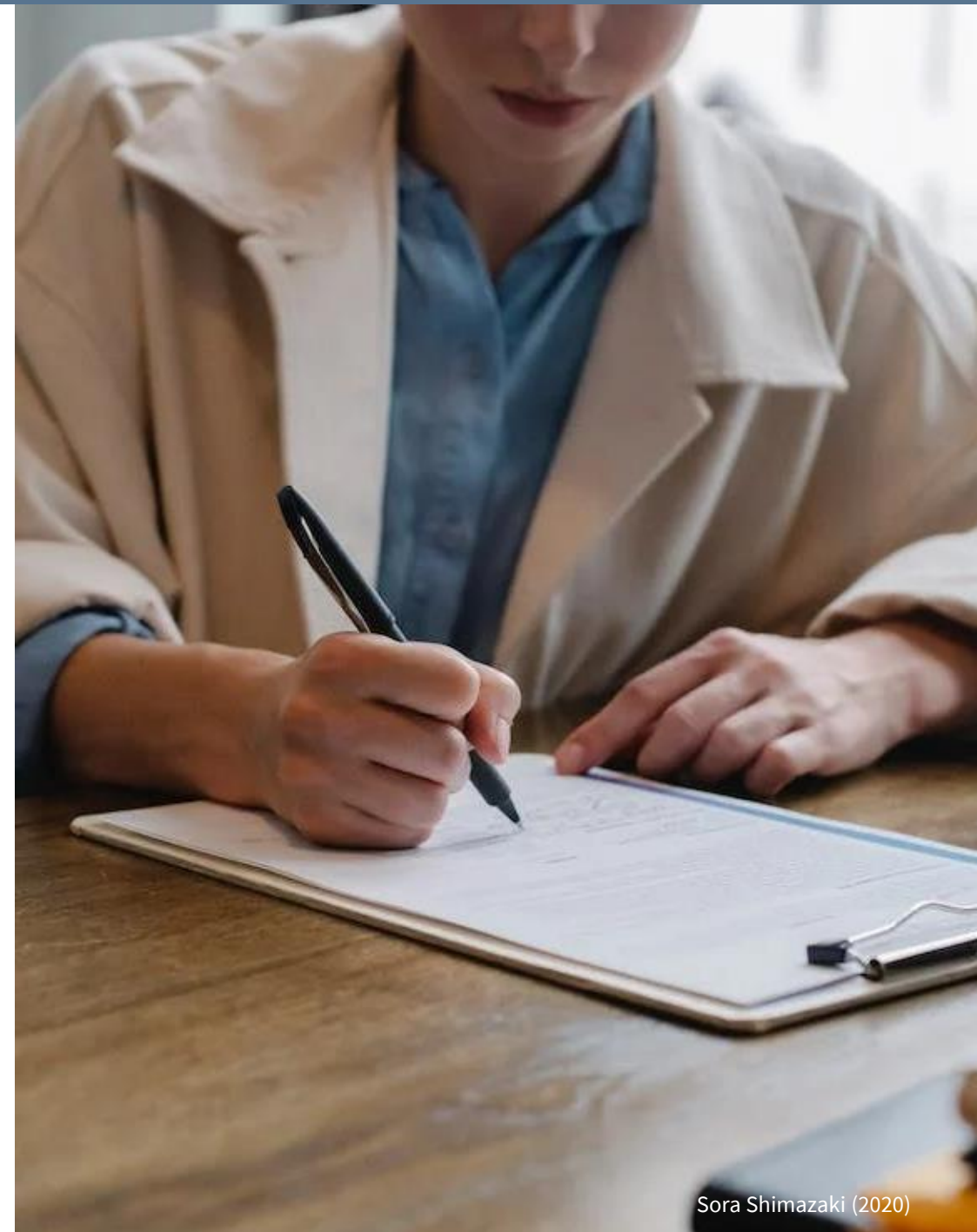
3 Data collection

Obtain informed consent and implementing consent management

Receive data collected, store and preserve raw data

Documentation of data, data collection, and the field period

- methodological report
- codebook and measurement instrument



4 Data analysis

Ensure that data analysis is in line with

- consent management
- copyrights and rights of usage defined in the project

Documentation of

- derived variables, e.g., indices and scales, weights etc.
- (steps in) data analysis (codes) for replication
- additional findings, not published (so far)



5 Data sharing

Identify and choose a suitable repository for FAIR data sharing

Consider legal issues, i.e., consent for data sharing and permission of copyright holder(s)

Prepare data for sharing

- which materials, in which formats
- documentation to enable re-use

Submit data to the repository

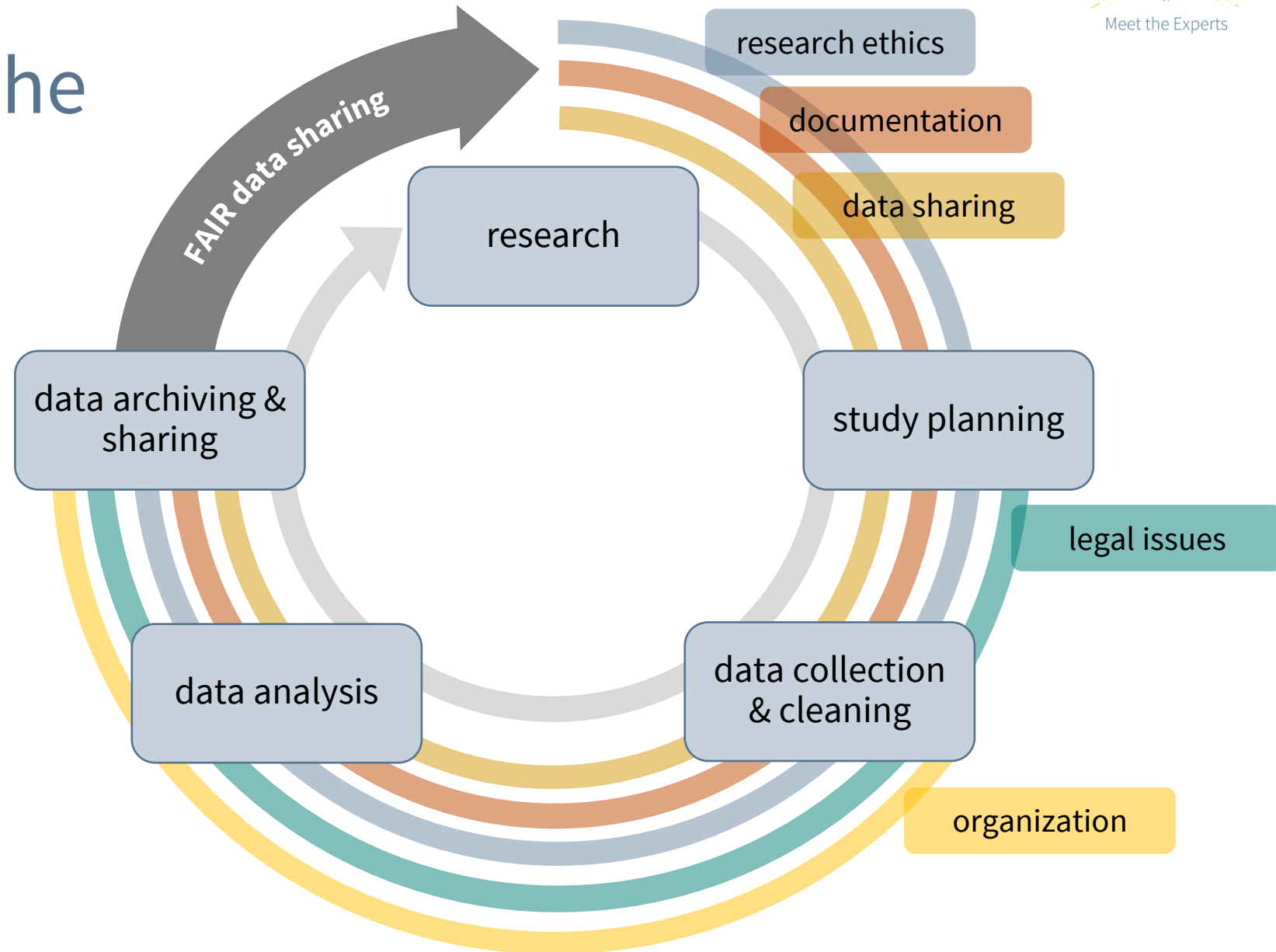
- be prepared for feedback and potential revision
- receive and make use of data citation (including a persistent identifier)



Coming back to the Data Life Cycle

data management

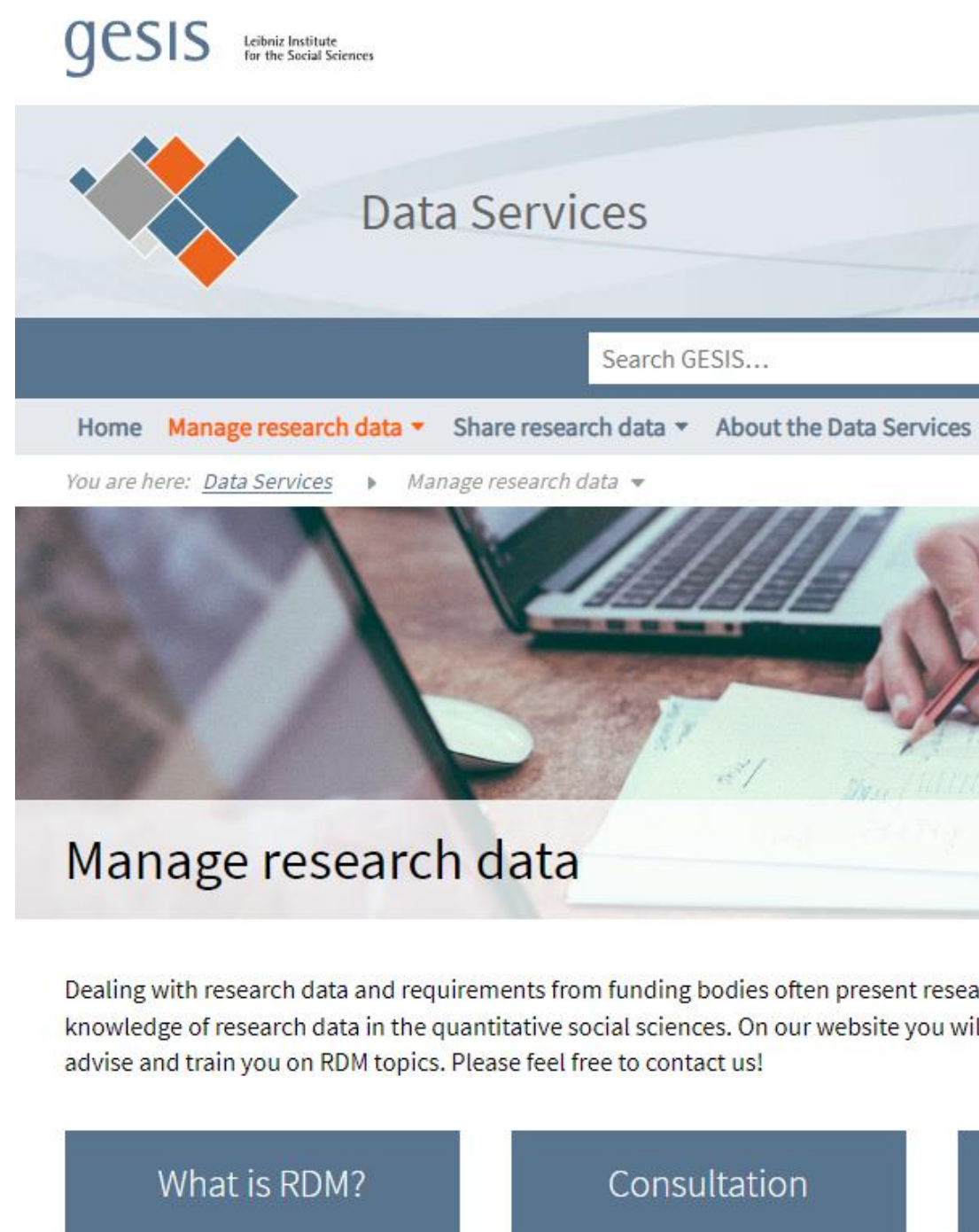
- is an early task, realized continuously over the whole data life cycle
- ensures usability and re-usability of the data
- improves FAIR data sharing



Some Finale Remarks

RDM-Training @ GESIS

- Our goals
 - transfer knowledge and build expertise on RDM for researcher, staff members of research and infrastructural institutions etc.
 - professionalize RDM, to improve data quality and data re-use
 - foster the idea of Open Science and Open Data, according to the FAIR Data Principles
- Our services
 - short-hand information on various topics of RDM (website)
 - consulting, on different aspects of RDM
 - (customized) trainings on RDM and its various aspects



The screenshot shows the GESIS website's 'Data Services' page. At the top left is the GESIS logo and 'Leibniz Institute for the Social Sciences'. To the right is a 'Data Services' header with a diamond-shaped graphic. Below this is a search bar with the text 'Search GESIS...'. A navigation menu includes 'Home', 'Manage research data' (highlighted in orange), 'Share research data', and 'About the Data Services'. A breadcrumb trail reads 'You are here: Data Services > Manage research data'. The main content area features a background image of a person writing on a notepad next to a laptop. The heading 'Manage research data' is prominently displayed. Below the heading, a paragraph states: 'Dealing with research data and requirements from funding bodies often present research knowledge of research data in the quantitative social sciences. On our website you will advise and train you on RDM topics. Please feel free to contact us!'. At the bottom, there are two dark blue buttons: 'What is RDM?' and 'Consultation'.

Experts Contact & GESIS Consulting



Contact: you can reach the speaker/s via e-mail: rdm@gesis.org

GESIS Consulting: GESIS offers individual consulting in a number of areas – including survey design & methodology, data archiving, digital behavioral data & computational social science – and across the research data cycle.

Please visit our website www.gesis.org for more [detailed information](#) on available services and terms.



Data Services, Data Archiving, and Research Data Management

Certification	14.09.2023	Certification for data archives and research data centers <i>Jonas Recker, Kerstin Beck</i>
Data Services	28.09.2023	Data Services: An Overview <i>Oliver Watteler</i>
Community Data Collection	12.10.2023	Community Data Collection <i>Alexander Jedinger</i>
Metadata & PIDs	26.10.2023	Metadata and PIDs <i>Wolfgang Zenk-Möltgen, Jan Schwalbach & Kokila Jamwal</i>
DP-R EX	09.11.2023	An Introduction to Domain-Specific Data Infrastructures: DP-R EX <i>Alexander Jedinger, Marlene Hilgenstock & Pascal Kolkwitz-Anstötz</i>
RDM & RDM Training	23.11.2023	Research Data Management & RDM-Training <i>Anja Perry & Sebastian Netscher</i>
Risk & Sensitive Data	14.12.2023	Secure Data Center: Secure Access to Sensitive Data <i>Deborah Wiltshire & Jara Kampmann</i>

Thank you for participating!

Further Information on GESIS, Data Services, and RDM-Training

- GESIS Data Services (2023). How-to Guide data sharing. <https://www.gesis.org/en/data-services/share-data/how-to-guide-data-sharing>.
- GESIS Data Services (2023). Manage Research Data. <https://www.gesis.org/en/data-services/manage-data>.
- GESIS – Leibniz-Institute for the Social Sciences (2023). Website. <https://www.gesis.org/en/home>.
- GESIS – Meet the Expert (2023). GESIS online talks on Social Science Methods and Research Data. <https://www.gesis.org/en/services/sharing-knowledge/meet-the-experts>.

Further Information on RDM

- CESSDA Training Team (2017 - 2022). *CESSDA Data Management Expert Guide*. Bergen, Norway: CESSDA ERIC. <https://dmeg.CESSDA.eu/>.
- DDP-Bildung & Verbund Forschungsdaten Bildung (2023). Stamp – Standardisierter Datenmanagementplan. Version 0.9. Frankfurt am Main: DIPF | Leibniz-Institut für Bildungsforschung und Bildungsinformation. <https://www.forschungsdaten-bildung.de/stamp-nutzen>. [German].
- forschungsdaten.info (2023). Forschung und Daten managen. <https://forschungsdaten.info/>. [German].
- German Network of Educational Research Data – VerbundFDB (2023). <https://www.forschungsdaten-bildung.de/?la=en>.

Images

- cottonbro studio (2020). Chaos im Büro. <https://www.pexels.com/de-de/foto/schwarz-und-weiss-buro-chaos-unordentlich-6539020/>. [Pexel-License](#).
- Fauxels (2019). Foto des Stiftes oben auf Notizbuch. <https://www.pexels.com/de-de/foto/foto-des-stiftes-oben-auf-notizbuch-3183170/>. [Pexel-License](#).
- Nekrashevich, A. (2021). Lupe oben auf dem Dokument. <https://www.pexels.com/de-de/foto/lupe-oben-auf-dem-dokument-6801648/>. [Pexel-License](#).
- pixabay (2015). Selektive Fokusfotografie von Farbstift. <https://www.pexels.com/de-de/foto/selektive-fokusfotografie-von-farbstift-lot-2170/>. CC-0.
- Roseclay, D. (2018). Nahaufnahme foto der schwarzen Schreibmaschine. <https://www.pexels.com/de-de/foto/nahaufnahmefoto-der-schwarzen-schreibmaschine-977930/>. [Pexel-License](#).
- Shimazaki, S. (2020). Fokussierte Frau, die in Zwischenablage schreibt. <https://www.pexels.com/de-de/foto/fokussierte-frau-die-in-zwischenablage-schreibt-waehrend-kandidat-anstellt-5668869/>. [Pexel-License](#).