



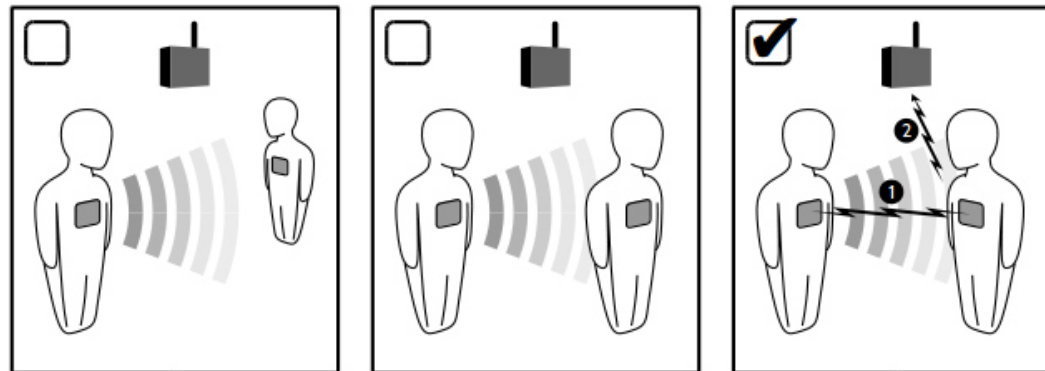
SocioPatterns Study

GESIS CSS Winter Symposium

Dr. Mathieu Géniois

The SocioPatterns setup

- RFID sensors
- Close range detection (1,5 m)
- High time resolution (20 s)

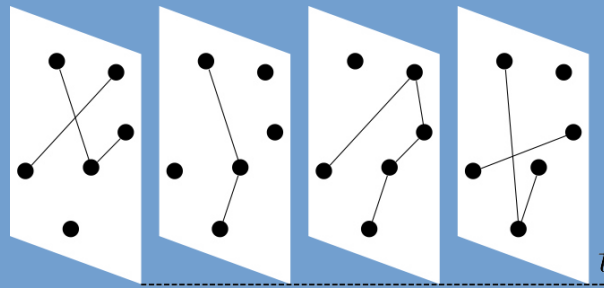


www.sociopatterns.org

Uses of the setup

Temporal network

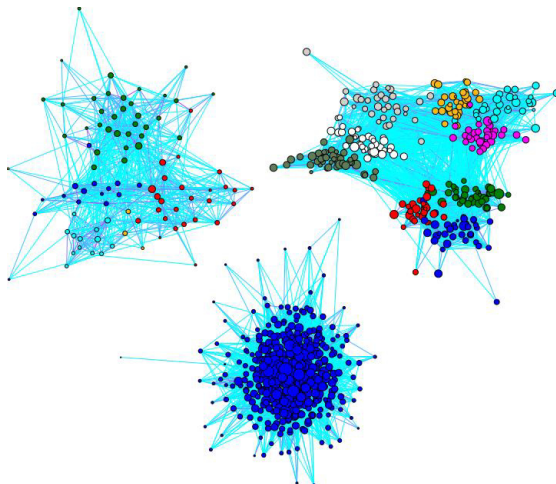
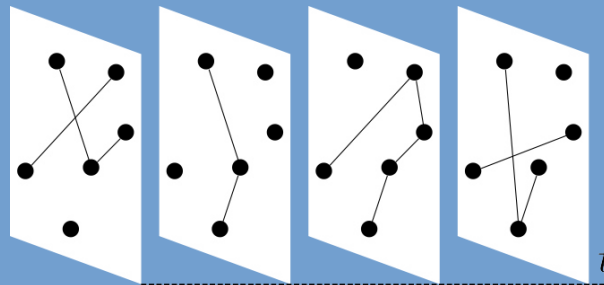
Each 20 seconds, we
have a picture of who is
in contact with whom



Uses of the setup

Temporal network

Each 20 seconds, we
have a picture of who is
in contact with whom

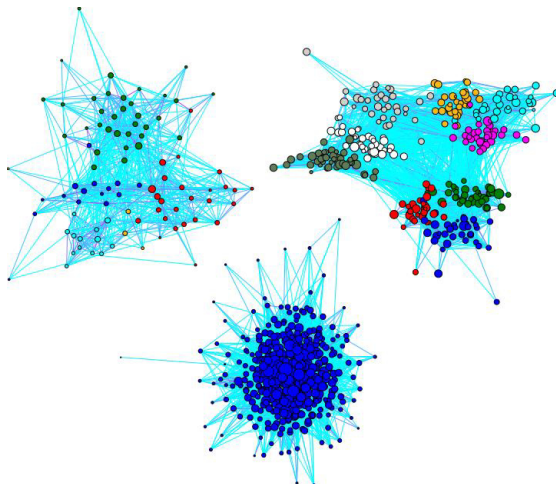
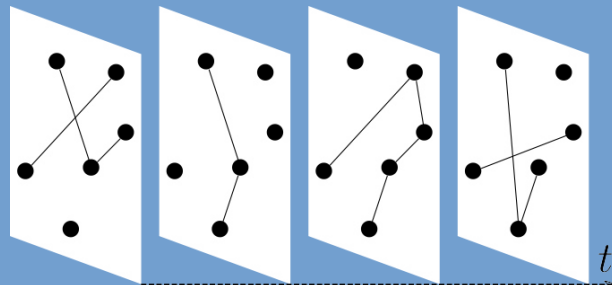


2BIO1	0.614	0.111	0.095	0.009	0.007	0.023	0.01	0.015	0.01
2BIO2	0.111	0.64	0.121	0.018	0.008	0.023	0.011	0.03	0.017
2BIO3	0.095	0.121	0.76	0.027	0.008	0.031	0.019	0.016	0.014
MP	0.009	0.018	0.027	0.684	0.09	0.098	0.023	0.017	0.032
MPst1	0.007	0.008	0.008	0.09	0.52	0.117	0.021	0.009	0.027
MPst2	0.023	0.023	0.031	0.098	0.117	0.686	0.035	0.015	0.046
PC	0.01	0.011	0.019	0.023	0.021	0.035	0.717	0.093	0.045
PCst	0.015	0.03	0.016	0.017	0.009	0.015	0.093	0.651	0.041
PSist	0.01	0.017	0.014	0.032	0.027	0.046	0.045	0.041	0.611
2BIO1	2BIO2	2BIO3	MP	MPst1	MPst2	PC	PCst	PSist	

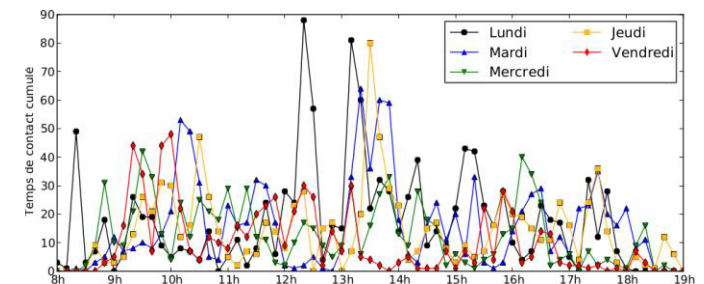
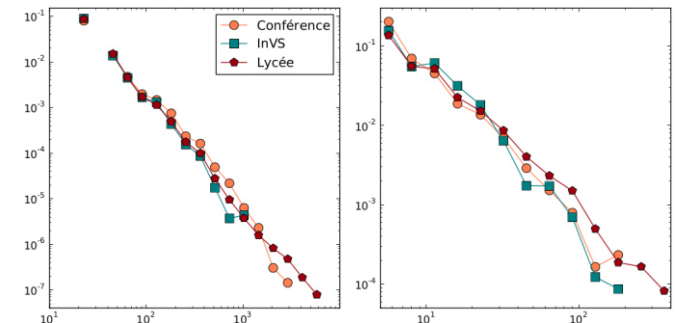
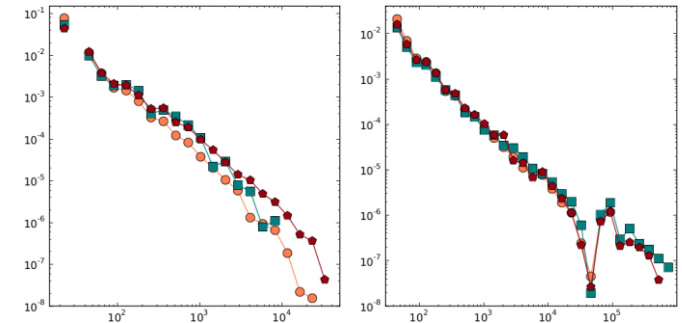
Uses of the setup

Temporal network

Each 20 seconds, we
have a picture of who is
in contact with whom



2BIO1	0.614	0.111	0.095	0.009	0.007	0.023	0.01	0.015	0.01
2BIO2	0.111	0.64	0.121	0.018	0.008	0.023	0.011	0.03	0.017
2BIO3	0.095	0.121	0.76	0.027	0.008	0.031	0.019	0.016	0.014
MP	0.009	0.018	0.027	0.684	0.09	0.098	0.023	0.017	0.032
MPst1	0.007	0.008	0.008	0.09	0.52	0.117	0.021	0.009	0.027
MPst2	0.023	0.023	0.031	0.098	0.117	0.686	0.035	0.015	0.046
PC	0.01	0.011	0.019	0.023	0.021	0.035	0.717	0.093	0.045
PCst	0.015	0.03	0.016	0.017	0.009	0.015	0.093	0.651	0.041
PSst	0.01	0.017	0.014	0.032	0.027	0.046	0.045	0.041	0.611
	2BIO1	2BIO2	2BIO3	MP	MPst1	MPst2	PC	PCst	PSst



Previous studies

Location	Year	N	Reference
French Health Observatory	2013	92	<i>Génois, Vestergaard, Fournet et al, Network Science 3:326–347, 9 2015</i>
French Health Observatory	2015	232	
Hospital	2010	81	<i>Vanhems, Barrat, Cattuto et al, PLoS ONE 8(9):e73970, 09 2013</i>
Primary school	2009	242	<i>Stehlé, Voirin, Barrat et al, PLoS ONE 6(8):e23176, 08 2011.</i>
Conference	2009	403	<i>Isella, Stehlé, Barrat et al, J. Th. Biol. 271(1):166–180, 2011</i>
High School	2013	326	<i>Mastrandrea, Fournet, Barrat, PLoS ONE 10(9):1–26, 09 2015</i>
Rural household	2016	75	<i>Kiti, Tizzoni, Kinyanjui et al EPJ Data Science 5:21, 2016</i>

www.sociopatterns.org

The study

Data

Contact data

Temporal contact network

Survey data

- Sociodemographic information
- Personality test

Problematics

- What are the mechanism of social interactions in a scientific conference?
- How do personality traits correlate with social behaviour?
- How do personality traits correlate with each other?

In collaboration with:

- The Survey Design & Methodology Dept. at GESIS
- The Centre de Physique Théorique in Marseille
- The ISI Foundation in Turin

Anonymity

Participation is voluntary

- Everyone is free to join or to opt out

Data is anonymous

- One 4-digit ID number for both the contact data and the survey data
- No record of the real identities
- No record of any other signal (GPS, sound, etc)

Opt out is possible at any moment

- Opt out at any time by coming at the registration desk
- After the Symposium, opting out is possible with your anonymous ID

Join in!



**Don't forget to return your sensor
at the end of the Symposium**